

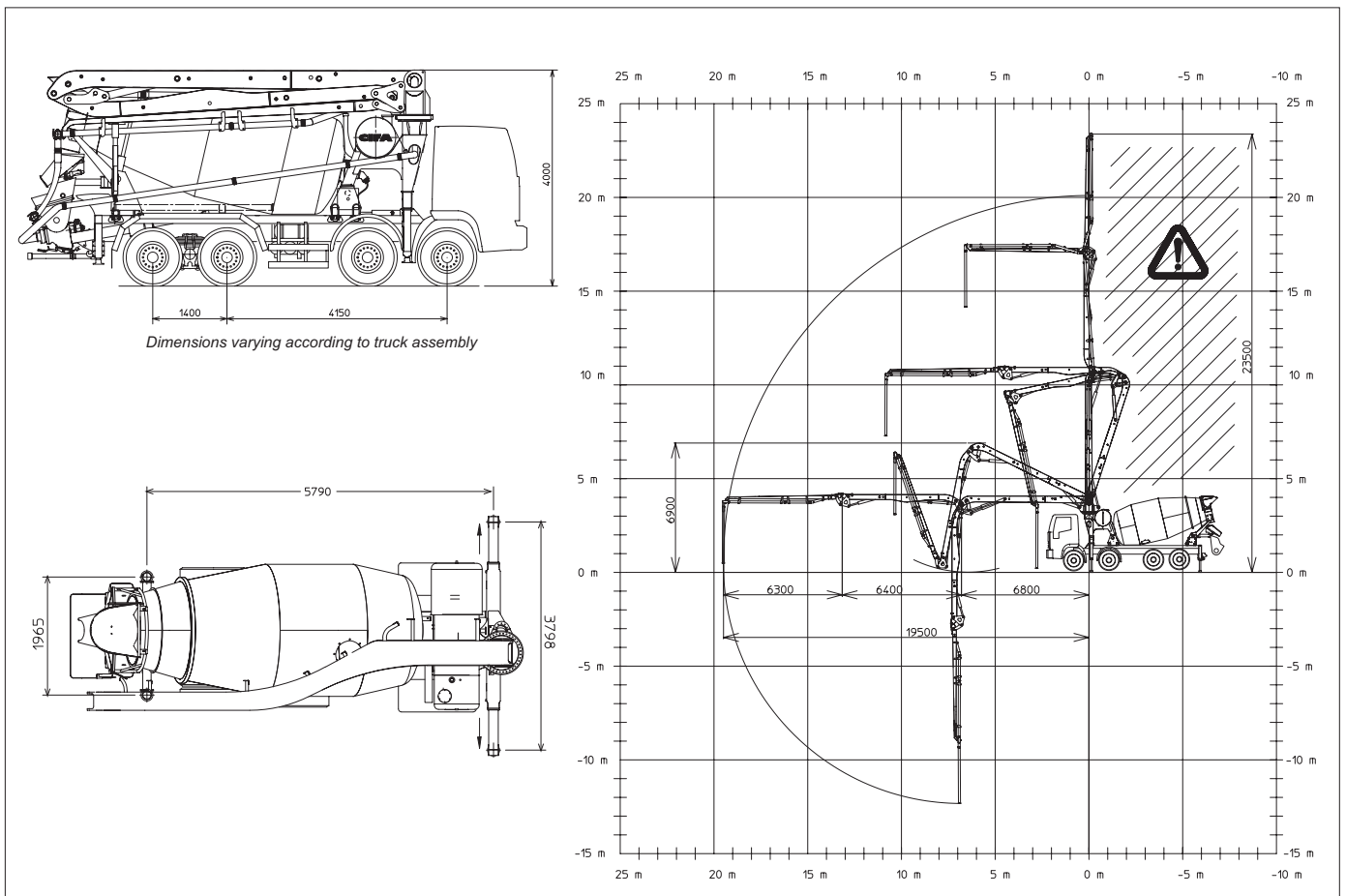
MK 24.4Z-80/115

TRUCK-MIXER PUMP "MAGNUM" MK 24.4Z-80/115

Placing Boom	MK 24.4Z
Pumping Unit	PB 607 S7
Concrete Mixer	RH-RHS 80/115
Driven by	PTO/Separate engine
Châssis	3-4 axes



Dimensions



MK 24.4Z-80/115

TRUCK-MIXER PUMP "MAGNUM" MK 24.4Z-80/115

Placing Boom	MK 24.4Z
Pumping Unit	PB 607 S7
Concrete Mixer	RH-RHS 80/115
Driven by	PTO / Separate engine
Châssis	3-4 axles

Main features

- Compact and harmonic line, studied for advantageous assembling on 3 or 4 axles chassis
- Ideal loads distribution on the axles to obtain better driving stability
- Self-supporting frame - torsion free FEM designed
- Outriggers fully hydraulic controlled on both machine sides
- High loading and mixing capacity drum and elliptic bottom
- Placing boom MK 24.4 Z, 3 sections, pipeline diameter 100 mm, "Z" folding system
- Proportional boom control allowing the operator to control more placing boom sections simultaneously
- The "BFC" Best-Flex Cifa supporting system allowing just one man to change delivery pipeline easily, quick and safety
- Concrete flow rate regulator
- Quiet pumping with high performances: smooth, continuous and easy movements
- Safety device on opening inspection hatch

Standard equipment

- 2 Proportional radio control with two boom movement speed, synthesiser for automatic frequency search, 8 position joy stick and concrete flow rate regulator. 20 mt cable
- Remote controlled vibrator on the concrete hopper grid
- Centralized lubrication system for pumping unit
- Automatic lubrication system for pumping pistons by hydraulic oil
- Additional manual lubrication system for pumping unit
- Hard plastic outrigger support plates with relevant housing
- Rear light on hopper
- Accessories for cleaning and pipes washing
- Automatic adjustment feeler of truck-mixer discharge into hopper
- Pumping unit with 7 inches "S" shaped valve

Optionals

- Concrete pipes at double thickness, in high resistant steel
- Continuous rotation of boom
- Cone-shaped discharging chute with end-cone diam. 200 mm
- Further 2 additional section chutes (supplied loose)
- Manual greasing system for reducer, rollers and rolling ring
- Automatic centralized greasing system for boom
- Hydraulic pipeline emergency kit
- High Pressure water pump
- "Ekos-B" device for concrete containment during steep rises

Concrete Mixer Technical data

MODEL		80	115
Nominal capacity	m^3	7	9
Drum geometric volume	m^3	12,8	14,6
Filling ratio	%	55	69
Max. drum speed	$1/min$	14	14
Water tank capacity	l	910	910
Water tank capacity/pressure	$l/1'-bar$	230/15	230/15
Liter-counter scale	l	0-500	0-500

Pumping unit technical data

MODEL		PB 607 S7
Max. theoretical output	m^3/h	61
Max. pressure on concrete	bar	71
Max. number of cycles per minute	n°	32
Concrete cylinders (diam. x stroke)	mm	200x1000
Concrete hopper capacity	l	400

Placing boom technical data

MODEL		MK 24.4Z
Pipeline diameter	mm	100
Max. vertical reach	m	23,5
Max. horizontal distance	m	19,5
Section numbers		3
1st section opening angle		108°
2nd section opening angle		184°
3rd section opening angle		271°
Rotating angle		270°
End hose length	m	4

Technical data and characteristics subject to modifications without notice